



Product Feature Matrix

Model Name	MAX-207HW2	MAX-216MR	MAX-206M1R Series	MAX-3x6M1	MAX-5x6 Series
Product Photo					
Description	Indoor Multiuser CPE	Indoor Data CPE	Indoor VoIP CPE	Outdoor Data CPE	USB 2.0 Dongle
Product Available Status	Now	Now	Now	Q1, '10	MAX-506: now MAX-516: Q1, '10 MAX-536: Q2, '10
Frequency Band	2.5 GHz ~ 2.7 GHz	3.4 GHz ~ 3.6 GHz	2.5 GHz ~ 2.7 GHz 3.4 GHz ~ 3.6 GHz 2.3 GHz ~ 2.4 GHz	2.5 GHz ~ 2.7 GHz 3.4 GHz ~ 3.6 GHz	2.5 GHz ~ 2.7 GHz 3.4 GHz ~ 3.6 GHz 2.3 GHz ~ 2.4 GHz
MIMO	Matrix A, B	Matrix A, B	Matrix A, B	Matrix A, B	Matrix A, B
TX/RX Support	1TX/2RX	1TX/2RX	1TX/2RX	1TX/2RX	1TX/2RX
Ethernet (RJ-45) Port	4	1	1	1	-
VoIP (RJ-11) Port	2	-	1	1	-
Wi-Fi	802.11b/g	-	-	-	-
Antenna	Internal Directional Antenna, 6 dBi x 2	Internal Omni Directional Antenna, 7 dBi (3.5 GHz); 6 dBi (2.5 GHz)	Internal Omni Directional Antenna 7 dBi (3.5 GHz); 6 dBi (2.3 GHz, 2.5 GHz)	Internal Cross-polarization Antenna 16 dBi (3.5 GHz); 15 dBi (2.5 GHz)	Internal Omni Quasi Antenna, 2 dBi x 2
Series Model	MAX-207HW2	MAX-216MR	MAX-206M1R MAX-216M1R MAX-236M1R	MAX-306M1 MAX-316M1	MAX-506 MAX-516 MAX-536
TX Power (Typical)	27 dBm	27 dBm	27 dBm	26 dBm	23 dBm



The optimize solution to WiMAX Service Provider Access Network

ZyXEL WiMAX Product Overview



ZyXEL, your best WiMAX partner (Worldwide interoperability for Microwave Access)

Based on the IEEE 802.16e-2005 global standard, the Mobile WiMAX technology leads a new revolution of wireless communications with solutions leveraging years of access network developments. Now ready for deployment, the WiMAX technology provides high-speed mobile Internet access (46 Mbps) with wide coverage (25 km), and it's ideal for mobile wireless solutions with low CAPEX. With years of experience, ZyXEL's R&D task force has unparalleled expertise on all

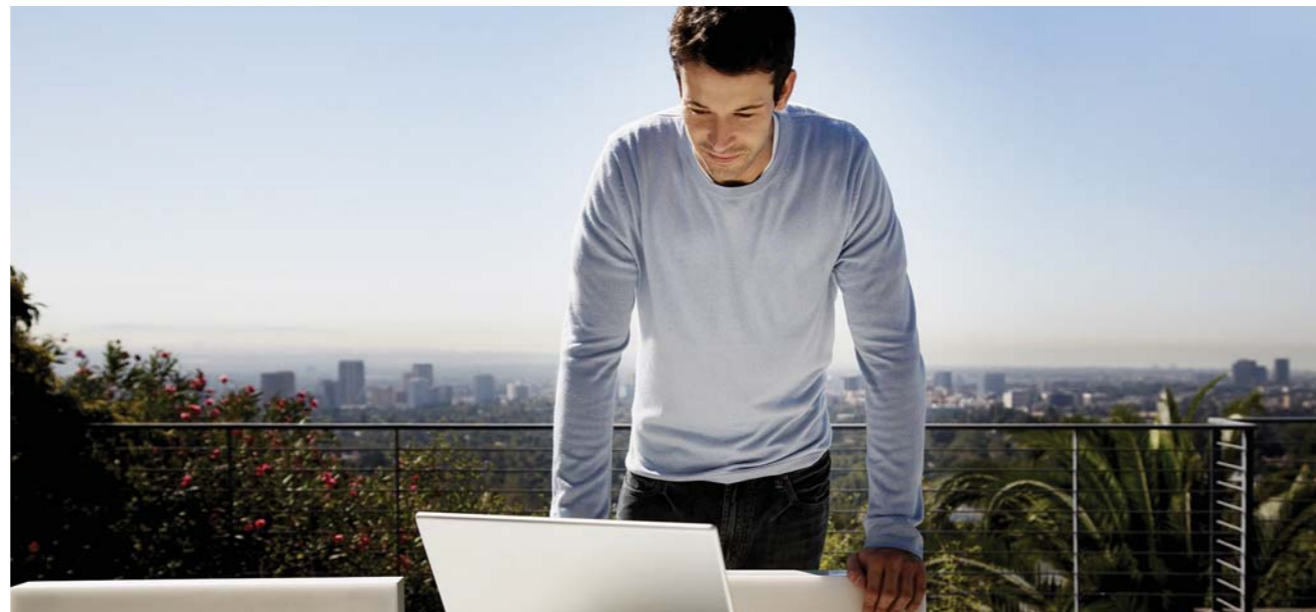
elements in the WiMAX ecosystem to support ZyXEL's global presence. ZyXEL has strong CSO (Customer Support Organizations) and IOT (Interoperability Teams) capable of fulfilling demands of leading WiMAX service providers by offering a full range of 802.16e mobile WiMAX CPE for diversified business, residential and vertical applications.

For more product information, visit us on the web at www.ZyXEL.com

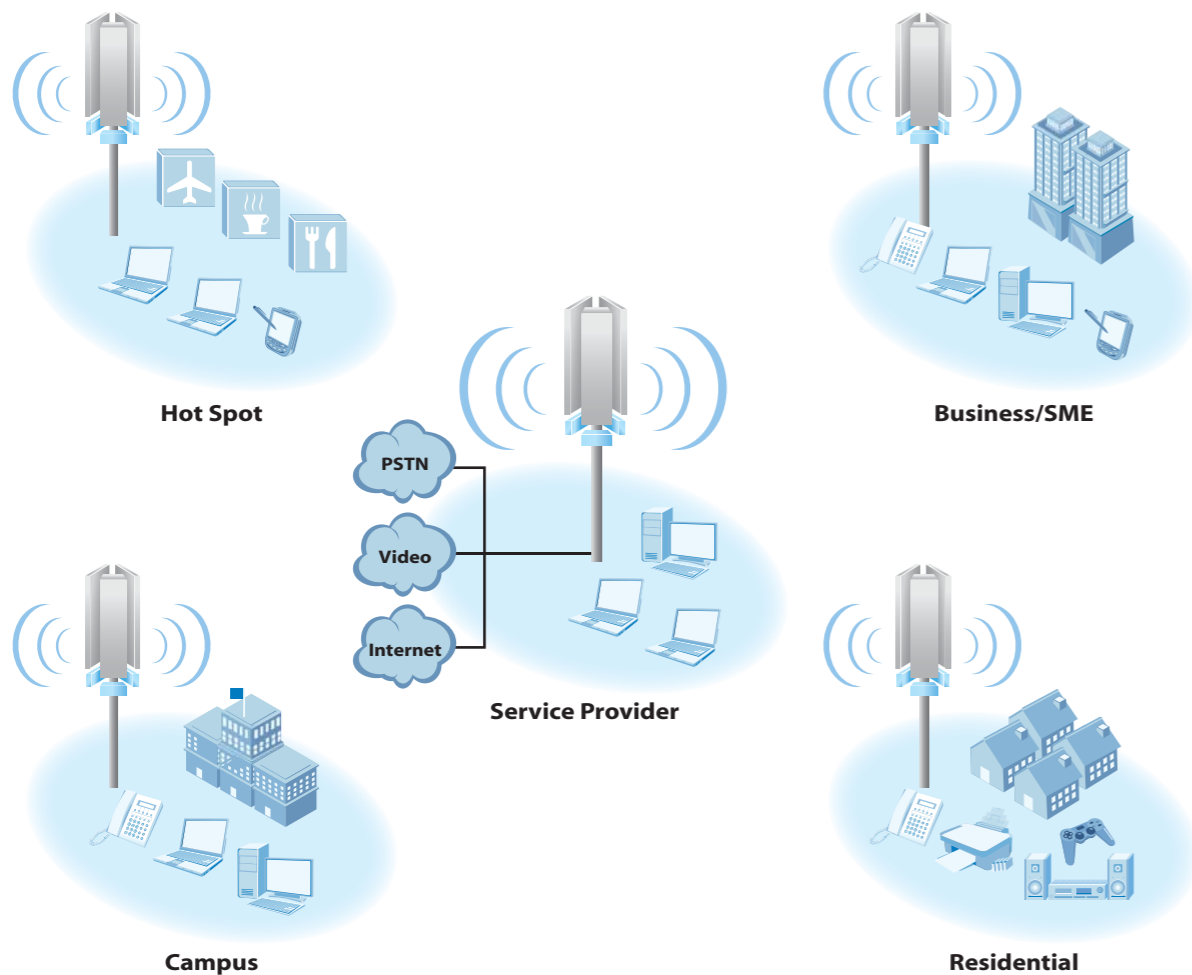


Copyright © 2010 ZyXEL Communications Corp. All rights reserved. ZyXEL, ZyXEL logo are registered trademarks of ZyXEL Communications Corp. All other brands, product names, or trademarks mentioned are the property of their respective owners. All specifications are subject to change without notice.





Application Scenarios



Benefits

Experienced BS IOT

ZyXEL partners with major WiMAX BS suppliers such as Alcatel-Lucent, Huawei, Samsung, ZTE and Motorola, etc. and is familiar with their network connections.

Solution-based Offerings

ZyXEL devices are equipped with customized settings and features for local carrier applications.

Local Support

ZyXEL's senior engineers and sales force are available globally not just to assist interoperability tests, but they are also capable of building support systems near customers for long-term partnerships.

Field Interoperability Knowledge

ZyXEL has the knowledge of interoperability on a global scale in terms of WiMAX data and voice access service network, AAA and field deployments.

SIP-based VoIP Communications

ZyXEL leverages decades of VoIP practices on analogue, DSL and FTTx networks. As such the company's WiMAX CPEs support standard SIP (RFC3261) and are suitable for IP telephony service deployments while sophisticated voice compression, advanced QoS and multimedia bandwidth management mechanisms provide premium voice communication quality.

Diversified CPE Options

ZyXEL provides various form factors for WiMAX CPE to fulfill different market needs. Service providers can offer different service packages to take advantage of the versatile product exterior design with invisible antennas.

Auto Provision

With years of experiences working with Telcos and Internet service providers worldwide, ZyXEL provides WiMAX network management tools such as SNMPv2, TR-069 and OMA-DM for WiMAX operators to offer services with better interoperability, installation, troubleshooting and maintenance.

